

MONTHLY MEMBERSHIP PROGRESS REPORT

LOCATION INDIA

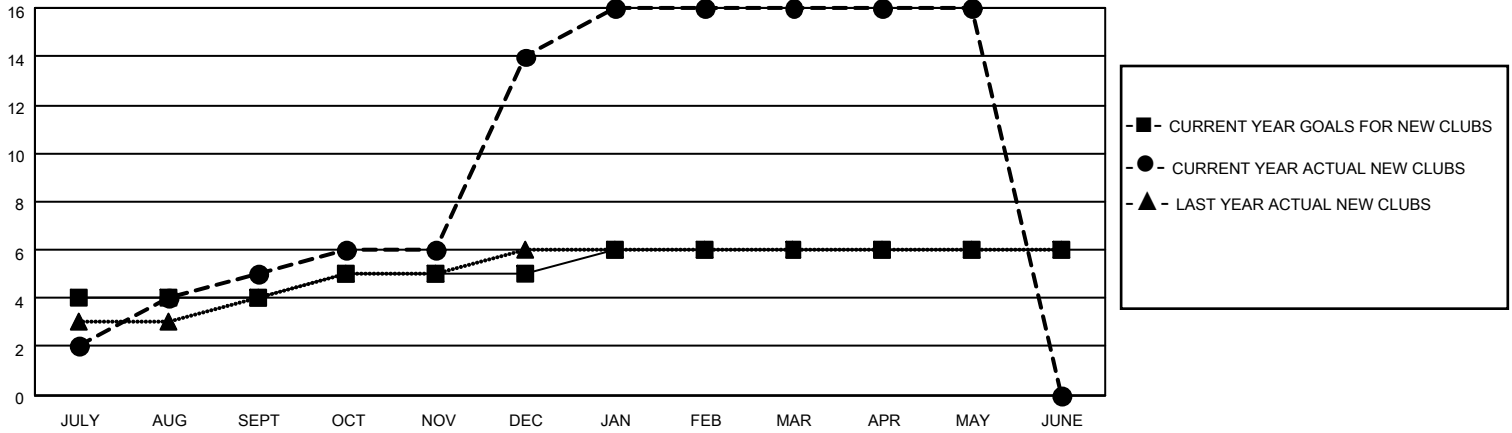
District 3234D2

Results as of: 5/31/2021

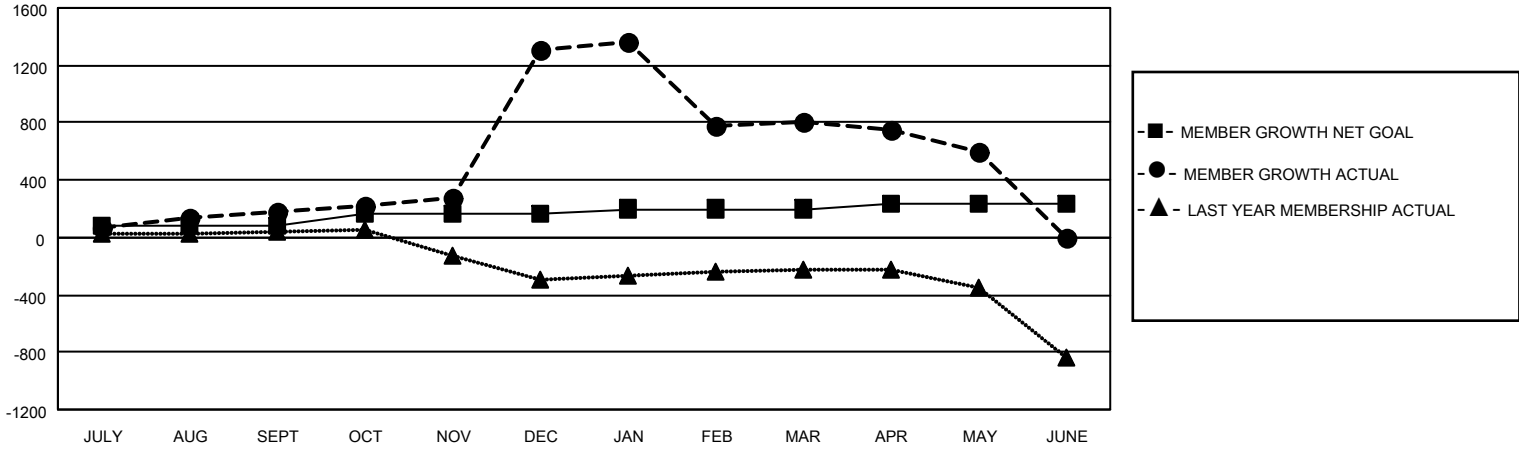
Clubs			
RESULTS FOR 2020-2021			
QUARTER	NEW CLUB GOAL	NEW CLUBS	DROPPED CLUBS
JULY/AUG/SEPT	4	5	3
OCT/NOV/DEC	1	9	0
JAN/FEB/MAR	1	2	25
APR/MAY/JUNE	0	0	0

Members			
RESULTS FOR 2020-2021			
QUARTER	MEMBER GROWTH NET GOAL	MEMBER GROWTH ACTUAL	DROPPED MEMBERS ACTUAL (including transfers)
JULY/AUG/SEPT	80	285	99
OCT/NOV/DEC	80	1542	410
JAN/FEB/MAR	40	448	796
APR/MAY/JUNE	40	25	230

GOALS AND ACTUAL NEW CLUBS CUMULATIVE



GOALS AND ACTUAL MEMBERS CUMULATIVE



DROPPED CLUBS: 28

94 CLUBS OF 151 ADDED 1 OR MORE NEW MEMBERS

GENDER DISTRIBUTION

MALE 4,419 (57.79%)
FEMALE 3,227 (42.21%)

DROPPED MEMBERS

[CLICK HERE FOR CUMULATIVE MEMBERSHIP DATA](#)

DECEASED	25
CLUB CANCELLED	608
OTHER	902
TOTAL	1,535

TOTAL FAMILY UNIT MEMBERS	7,656
FAMILY MEMBERS PAYING HALF DUES	4,520